

Operating instructions

Replacing the circuit board for 120 V AC, 230 V AC on VAS 6–8, VCS 6–8, MB 7, VG 40–65, VR 40–65



Translation from the German

© 2013 Elster GmbH

Safety

Explanation of symbols

- , 1, 2, 3... = Action
- > = Instruction

Liability

We will not be held liable for damage resulting from non-observance of the instructions and non-compliant use.

Safety instructions

Information that is relevant for safety is indicated in the instructions as follows:

DANGER

Indicates potentially fatal situations.

WARNING

Indicates possible danger to life and limb.

! CAUTION

Indicates possible material damage.

All interventions may only be carried out by qualified gas technicians. Electrical interventions may only be carried out by qualified electricians.

Conversion, spare parts

All technical changes are prohibited. Only use OEM spare parts.

Transport

On receipt of the product, check that the delivery is complete (see Part designations). Report any transport damage immediately.

Storage

Store the product in a dry place. Ambient temperature: see Technical data.

Checking the usage

Intended use




These instructions are only to be used for replacing the circuit board.

Please refer to the original operating instructions for all other specifications regarding commissioning. They should be stored in close proximity to the device or kept by the operator. The instruction manual can also be found at www.docuthek.com.

Any other use is considered as non-compliant.

The circuit board can be replaced on the following devices only.

Type label

<p>www.kromschroeder.com Osnabrück, Germany</p> <p>VG</p> <p>120/230 V~</p> <p></p>	<p>www.kromschroeder.com Osnabrück, Germany</p> <p>VR</p> <p>120/230 V~</p> <p></p>
<p>www.kromschroeder.com Osnabrück, Germany</p> <p>Gas-Magnetventil valVario®</p> <p>Vxx</p> <p>120/230 V~</p>	<p>www.kromschroeder.com Osnabrück, Germany</p> <p>MB 7</p> <p>120/230 V~</p> <p></p>

- > Mains voltage, electrical power consumption, ambient temperature, enclosure, inlet pressure and installation position – see type label.

Replacing the circuit board

WARNING

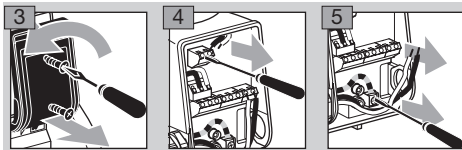
Electric shocks can be fatal! Before working on possible live components, ensure the unit is disconnected from the power supply.

- > The solenoid actuator heats up during operation depending on ambient temperature and voltage.

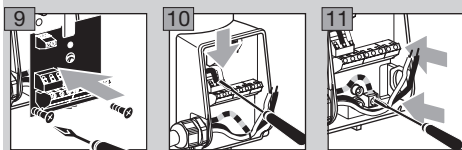
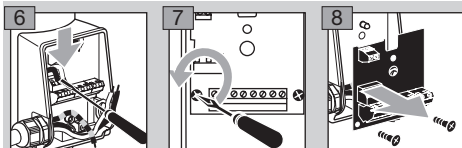


- 1** Disconnect the system from the electrical power supply.
- 2** Shut off the gas supply.

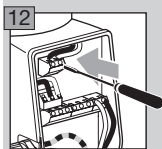
VAS 6-8, VCS 6-8, MB 7



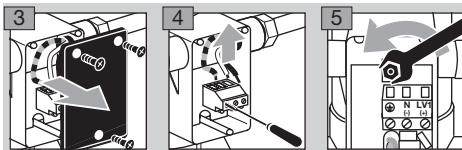
- ▷ If a position indicator is wired, disconnect the conductors by pressing down the contacts.



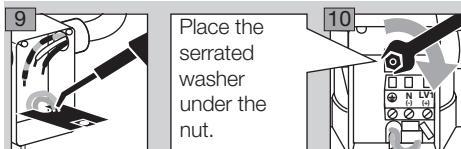
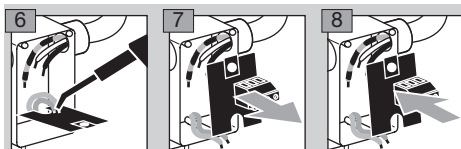
- ▷ If fitted, wire the position indicator.



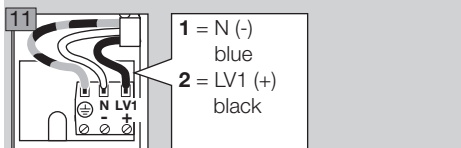
VG 40-65, VR 40-65



- ▷ Set the serrated washer aside.



Place the serrated washer under the nut.



1 = N (-)
blue
2 = LV1 (+)
black

Electric strength test

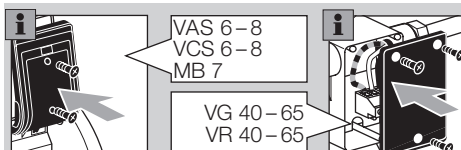
- 1** Once **L** and **N** have been wired and before the devices are commissioned, a voltage surge test must be carried out.

Test points: mains connection terminals (N, L) with respect to PE wire terminal (PE \oplus).

Operating voltage > 150 V: 1752 V AC or 2630 V DC, testing time 1 second.

Operating voltage ≤ 150 V: 1488 V AC or 2240 V DC, testing time 1 second.

- 2** Screw the cover onto the connection box once the electrical test has been completed successfully.



VAS 6-8
VCS 6-8
MB 7

VG 40-65
VR 40-65

- 3** The unit is fit for use again.

Contact

If you have any technical questions, please contact your local branch office/agent. The addresses are available on the Internet or from Elster GmbH.

We reserve the right to make technical modifications in the interests of progress.

elster
Kromschroder

Elster GmbH
Postfach 28 09, D-49018 Osnabrück
Strothweg 1, D-49504 Lotte (Büren)

T +49 541 1214-0

F +49 541 1214-370

info@kromschroeder.com, www.kromschroeder.com