

03250789

(D) (GB) (F) (NL) (I) (E) (DK) (S) (N) (P) (GR)
(TR) (CZ) (PL) (RUS) (H) → www.docuthek.com

Operating instructions

Power supply PFP 700, Relay module PFR 704



Contents

Power supply PFP 700, Relay module PFR 704	1
Contents	1
Safety	1
Checking the usage	2
PFP 700	2
PFR 704	2
Installation	2
Replacing PFP 700/PFR 704	2
Wiring	3
Commissioning	3
Faults	4
Technical data	4
Certification	4
Contact	4

Safety

Please read and keep in a safe place



Please read through these instructions carefully before installing or operating. Following the installation, pass the instructions on to the operator. These instructions can also be found at www.docuthek.com.

Explanation of symbols

- , **1**, **2**, **3**... = Action
- ▷ = Instruction

Liability

We will not be held liable for damages resulting from non-observance of the instructions and non-compliant use.

Safety instructions

Information that is relevant for safety is indicated in the instructions as follows:

DANGER

Indicates potentially fatal situations.

WARNING

Indicates possible danger to life and limb.

! CAUTION

Indicates possible material damage.

All interventions may only be carried out by qualified gas technicians. Electrical interventions may only be carried out by qualified electricians.

Conversion, spare parts

All technical changes are prohibited. Only use OEM spare parts.

Transport

On receipt of the product, check that the delivery is complete (see Part designations). Report any transport damage immediately.

Storage

Store the product in a dry place. Ambient temperature: see Technical data.

Changes to edition 05.09

The following chapters have been changed:

- Wiring
- Certification

Checking the usage

PFP 700

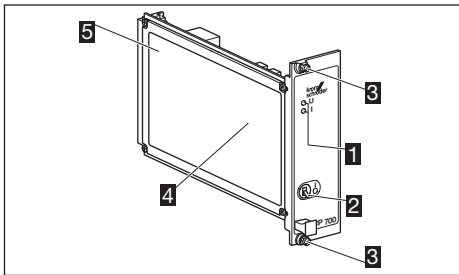
Mounted in a module subrack, for power supply to the control inputs of burner control units PFU 760 and PFU 780, or for auxiliary voltage supply to relay module PFR 704.

This function is only guaranteed when used within the specified limits – see Technical data. Any other use is considered as non-compliant.

Typenschlüssel

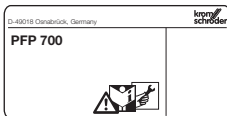
Code	Description
PFP	Power supply
700	Series
T	Mains voltage: 220/240 V AC
N	110/120 V AC
Z	Special version

Part designations



- 1 LED panel
- 2 On/Off switch
- 3 Screws for attachment to the subrack
- 4 Connection diagram
- 5 Type label

Input voltage and ambient temperature – see type label.



PFR 704

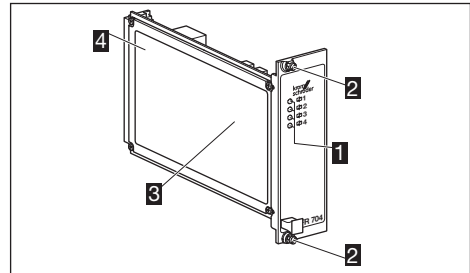
Mounted in a module subrack, for contact multiplication, e.g. if several air valves are activated via one control signal for pre-purge, or for heating/cooling switchover when using an impulse system MPT.

This function is only guaranteed when used within the specified limits – see Technical data. Any other use is considered as non-compliant.

Type code

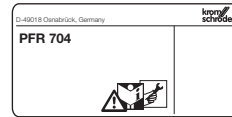
Code	Description
PFR	Relay module
7	Series
04	With 4 independent relays
T	Mains voltage: 220/240 V AC
N	110/120 V AC
K	24 V DC
H	24 V AC
Z	Special version

Part designations



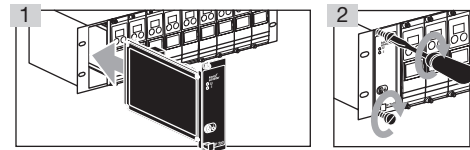
- 1 LED panel for relay activation
- 2 Screws for attachment to the subrack
- 3 Connection diagram
- 4 Type label

Input voltage – see type label.



Installation

- ▷ Installation position: any.
- ▷ Distance between PFR 704 and burner: max. 100 mm (328 ft).



Replacing PFP 700/PFR 704

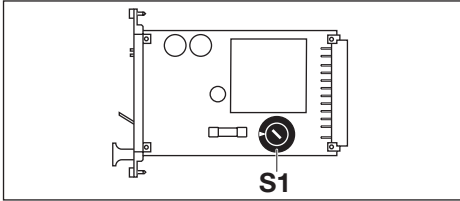
- ▷ Since February 2008, power supply PFP 700 and relay module PFR 704 have had a black front plate. PFP 700 and PFR 704 with a black front plate incorporate all the previous functions of PFP 700 and PFR 704 with a grey front plate.
- ▷ The new power supply PFP 700 and the relay module PFR 704 are interchangeable with units of earlier construction stages.

PFP 700

! CAUTION

Please observe the following to ensure that the PFP is not damaged during operation:

- Check the mains voltage setting of the replaced unit – see setting of switch **S1** (115 V or 230 V).
- If necessary, adjust the setting of switch **S1** on the new unit.



PFR 704

! CAUTION

Please observe the following to ensure that the PFR is not damaged during operation:

- The relay inputs must only be connected to the permitted voltages (see connection diagram **B** for PFR 704).

Wiring

! WARNING

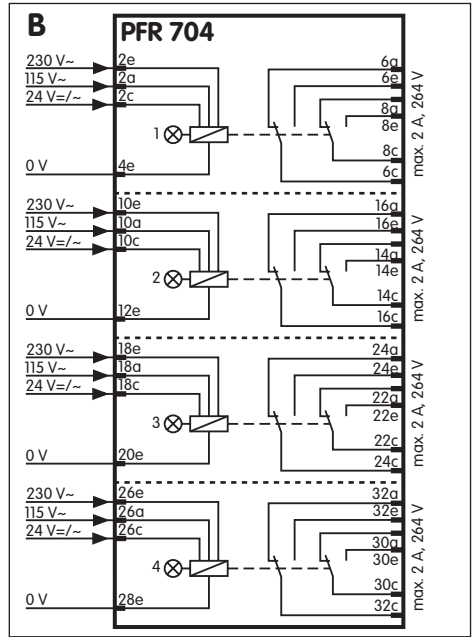
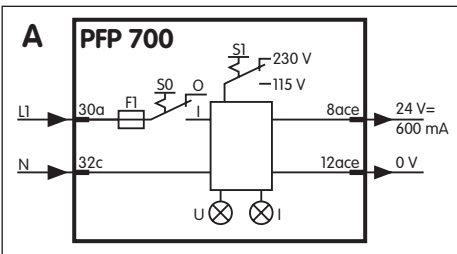
Electric shocks can be fatal! Before working on possible live components ensure the unit is disconnected from the power supply.

- 1** Disconnect the system from the electrical power supply.
 - ▷ PFP and PFR do not meet the requirements for safety extra low voltage (SELV/PELV).
 - ▷ Ensure that the board outputs are connected to mains voltage of one phase only or are only supplied with 24 V AC/DC. Do not use the outputs for different phases (L1, L2 and L3).
 - ▷ Connection only with permanent wiring.
- 2** Wire as shown on the connection diagram.

Connection diagrams

A = PFP 700

B = PFR 704



Commissioning

! CAUTION

Mains voltage may only be connected by trained personnel.

- 1** Check the electrical wiring, switch settings and parameter settings of the 19" boards and the burner settings before commissioning.
- 2** Switch on the system.

PFP 700

- 3** Apply voltage to terminal 30a.
- 4** Switch on power supply PFP 700.
 - ▷ The green LED will light up.

PFR 704

- ▷ The green LED will light up if a relay is activated.

Faults

WARNING

Electric shocks can be fatal! Before working on possible live components ensure the unit is disconnected from the power supply.


Fault-clearance must only be undertaken by authorised, trained personnel.

Faults

Cause

Remedy

Red LED lights up on PFP 700 – 24 V DC output is switched off.

 Overload at terminals 8ace – 12ace: current > 600 mA.

 Check wiring, reduce load.

Technical data

Front width 8 depth units = 40.6 mm,

Overall height 3 height units = 128.4 mm.

Ambient temperature:

-20°C to +60°C.

PFP 700

Mains voltage:

110/120 V AC, -15/+10%, 50/60 Hz,

220/240 V AC, -15/+10%, 50/60 Hz.

Power consumption:

PFP 700: 25 VA.

Output load:

24 V DC, 600 mA, short circuit-proof,

output rating 14 VA, PFP 700 switches off in the event of an output overload.

Fine-wire fuse: 0.315 A, slow-acting L, pursuant to IEC 127-2/3.

Weight: approx. 0.75 kg.

PFR 704

Input voltage: 3 inputs per relay,

110/120 V AC, -15/+10%, 50/60 Hz,

220/240 V AC, -15/+10%, 50/60 Hz,

24 V AC/DC, ± 10%.

Power consumption per relay: 25 mA.

Contact rating of floating outputs:

max. 2 A, 264 V (not fused internally).

Weight: 0.17 kg.

Contact

If you have any technical questions, please contact your local branch office/agent. The addresses are available on the Internet or from Elster GmbH.

We reserve the right to make technical modifications in the interests of progress.

Certification

Declaration of conformity

We, the manufacturer, hereby declare that the products labelled accordingly comply with the essential requirements of the following Directives and Standards:

- Gas Appliances Directive (90/396/EEC) in conjunction with EN 298,
- Low Voltage Directive (2006/95/EC) in conjunction with the relevant standards,
- Electromagnetic Compatibility Directive (2004/108/EC) in conjunction with the relevant standards relating to radiation,
- designed for applications pursuant to Directive 98/37/EC.

Comprehensive quality assurance is guaranteed by a certified Quality System pursuant to DIN EN ISO 9001 according to annex II, paragraph 3 of Directive 90/396/EEC.

Elster GmbH

Honeywell

**krom//
schroder**

Elster GmbH

Strotheweg 1, D-49504 Lotte (Büren)

Tel. +49 541 1214-0

Fax +49 541 1214-370

hts.lotte@honeywell.com, www.kromschroeder.com