

PC opto-adapter PCO 200

OPERATING INSTRUCTIONS

· Edition 12.24 · EN · 03251282



CONTENTS

1 Safety	1
2 Checking the usage	2
3 Establishing a connection	2
4 Determining the COM port number	3
5 Technical data	3
6 Designed lifetime	3
7 Certification	4
8 Logistics	4

1 SAFETY

1.1 Read the operating instructions before use



Please read through these instructions carefully before installing or operating. Following the installation, pass the instructions on to the operator. This unit must be installed and commissioned in accordance with the regulations and standards in force. These instructions can also be found at www.docuthek.com.

1.2 Explanation of symbols

1, 2, 3, a, b, c = Action

→ = Instruction

1.3 Liability

We will not be held liable for damage resulting from non-observance of the instructions and non-compliant use.

1.4 Safety instructions

Information that is relevant for safety is indicated in the instructions as follows:

DANGER

Indicates potentially fatal situations.

WARNING

Indicates possible danger to life and limb.

CAUTION

Indicates possible material damage.

All interventions may only be carried out by qualified gas technicians. Electrical interventions may only be carried out by qualified electricians.

1.5 Conversion, spare parts

All technical changes are prohibited. Only use OEM spare parts.

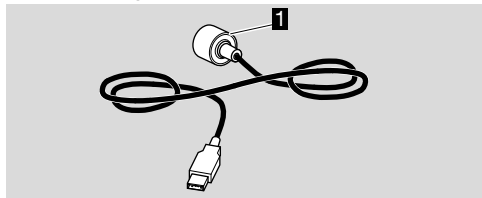
2 CHECKING THE USAGE

PC opto-adapter PCO 200 for cable-based communication between Kromschöder devices with optical interface and a PC or notebook with USB interface.

Preconditions for operation with PC opto-adapter PCO 200: PC software BCSof from version 3.6.8, PC with USB interface.

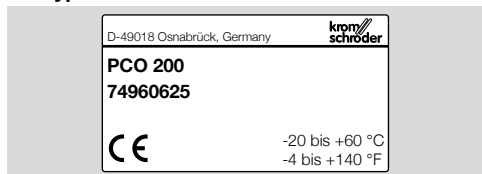
This function is only guaranteed when used within the specified limits – see page 3 (5 Technical data). Any other use is considered as non-compliant.

2.1 Part designations



1 PC opto-adapter PCO 200

2.2 Type label



3 ESTABLISHING A CONNECTION

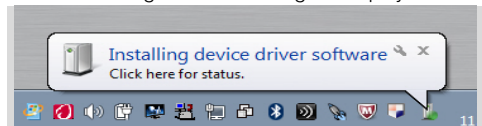
3.1 Driver known

1 Connect PCO 200 to an available USB port on the PC or notebook.

→ The required driver is already available in your operating system. The connection between device and PC/notebook will be established automatically.

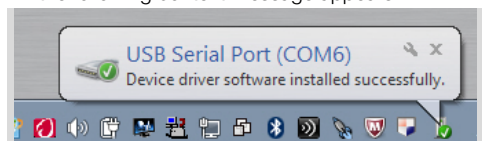
→ The "Installing device driver software" message appears in the taskbar.

→ The following context message is displayed:



→ The PCO 200 driver is being installed.

→ Once the driver has been successfully installed, the following context message appears:



→ The PCO 200 is ready for operation.

→ When you now try to start BCSof, you will be asked to enter the COM port number in the interface configuration dialog box.

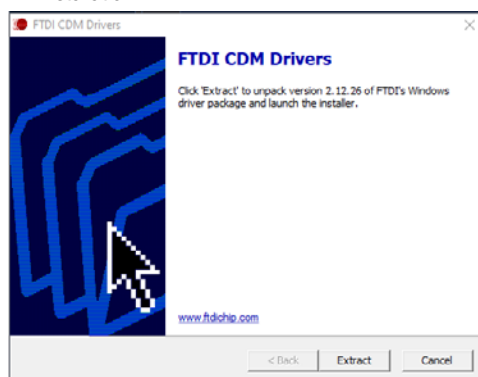
2 See page 3 (4 Determining the COM port number).

3.2 Installing the driver

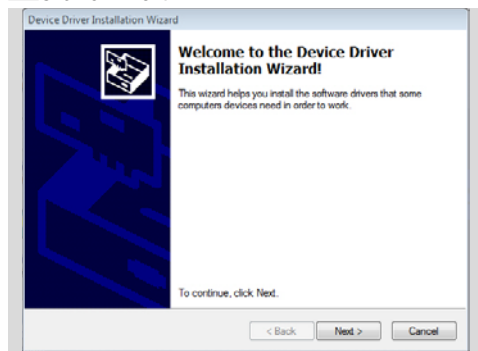
1 Download the "BCSoft" PC software from the Docuthek.

2 Extract the ZIP file.

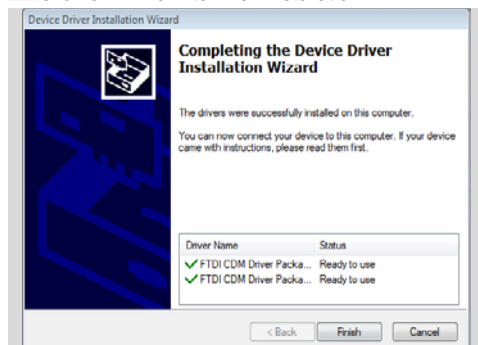
3 Click on "Extract" to extract the files and start installation.



4 Click on "Next".



5 Click on "Finish" to finish installation.

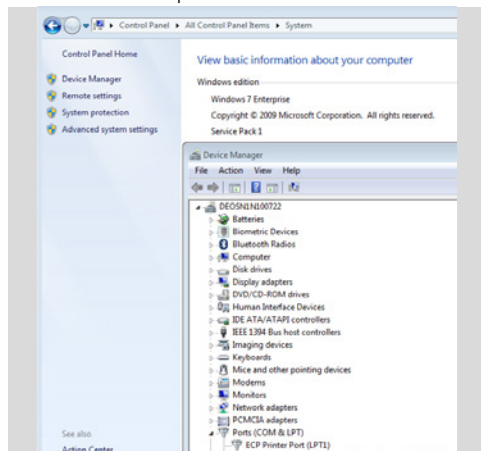


→ If the installation procedure has been completed successfully, the PCO 200 can be connected to an available USB port and is ready for use.

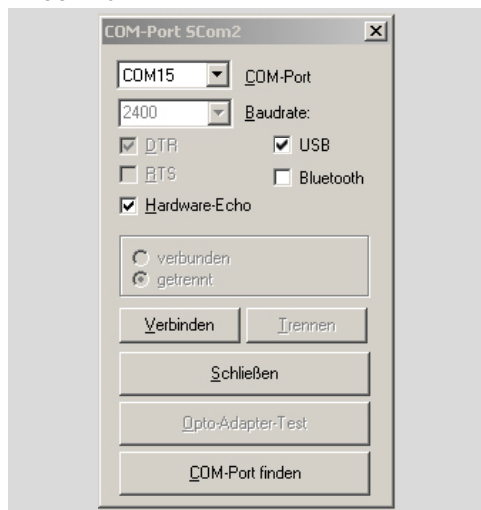
4 DETERMINING THE COM PORT NUMBER

→ The COM port number of the PCO 200 can be found in the Device Manager in the Control Panel.

- 1 Open the interface configuration dialog box by selecting the menu item Scom2 or Chipcom under Extras\Options\Interface in BCSofT.



- 2 Enter the COM port number, in this example "COM 15".



- 3 Click on "Connect" to connect BCSofT to the PCO 200.

5 TECHNICAL DATA

Electrical interface: USB V1.1
Connector: USB Type A plug
Operating voltage: passive 5 V power supply (via USB port)

FTDI driver (virtual COM port/VCP); current drivers can also be found at www.ftdichip.com
Operating systems: Windows XP or higher
IR interface: baud rate 2400 baud
Optical interface retaining force: > 17 N
Lens dia.: 26 mm
Cable length: 3 m
Weight: approx. 90 g
Housing: anodized aluminium
Colour: black
Ambient temperature:
-20 to +60°C (-4 to +140°F)
Storage temperature:
-40 to +70°C (-40 to +158°F)

6 DESIGNED LIFETIME

Max. service life under operating conditions:
10 years after date of production.

7 CERTIFICATION

7.1 Declaration of conformity



We, the manufacturer, hereby declare that the product PCO 200 complies with the requirements of the listed Directives and Standards.

Directives:

- 2004/108/EC – EMC

Standards:

- EN 610006-2
- EN 610006-4

The production is subject to a quality management system pursuant to DIN EN ISO 9001.

Elster GmbH

Scan of the Declaration of conformity (D, GB) – see

www.docuthek.com

8 LOGISTICS

Transport

Protect the unit from external forces (blows, shocks, vibration).

Transport temperature: see page 3 (5 Technical data).

Transport is subject to the ambient conditions described.

Report any transport damage on the unit or packaging without delay.

Check that the delivery is complete.

Storage

Storage temperature: see page 3 (5 Technical data).

Storage is subject to the ambient conditions described.

Storage time: 6 months in the original packaging before using for the first time. If stored for longer than this, the overall service life will be reduced by the corresponding amount of extra storage time.

FOR MORE INFORMATION

The Honeywell Thermal Solutions family of products includes Honeywell Combustion Safety, Eclipse, Exothermics, Hauck, Kromschöder and Maxon. To learn more about our products, visit ThermalSolutions.honeywell.com or contact your Honeywell Sales Engineer.

Elster GmbH
Strotheweg 1, D-49504 Lotte
T +49 541 1214-0
hts.lotte@honeywell.com
www.kromschroeder.com

Global centralized service deployment coordination:
T +49 541 1214-365 or -555
hts.service.germany@honeywell.com

Translation from the German
© 2024 Elster GmbH

Honeywell
kromschöder

We reserve the right to make technical modifications in the interests of progress.

PCO 200 · Edition 12.24