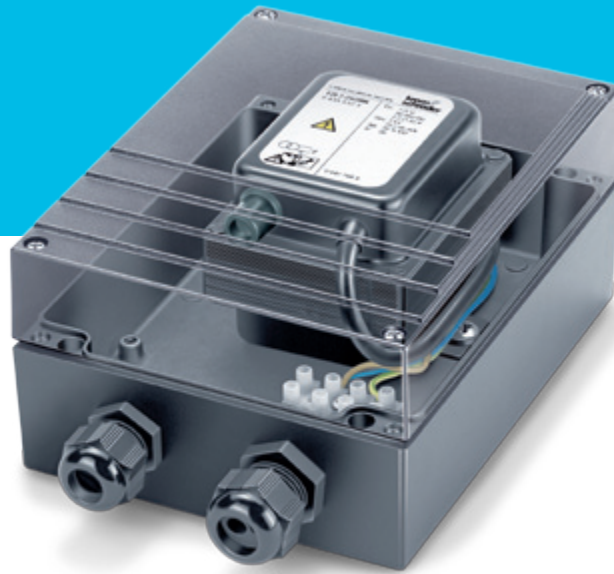


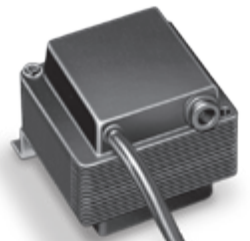
Ignition transformers TZI, TGI

Product brochure · GB
3.1.6.4 Edition 11.09

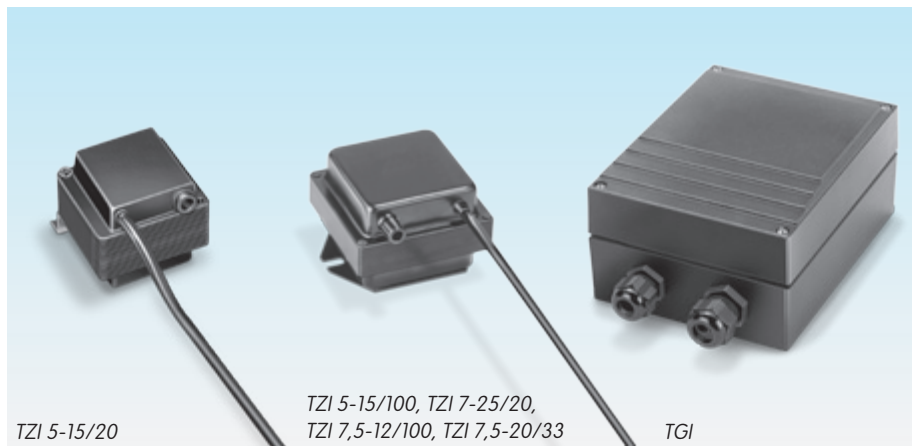


krom
schroder

- Electrical ignition of gas burners
- Ignition and burner control with a single electrode possible
- For installation in a control cabinet or wall mounting
- Complying with EN 61558-2-3
- TZI 7,5-20/33R complies with CSA
- TZI 7,5-20/33R and TZI 7,5-20/33W are UL listed



elster
Kromschroder

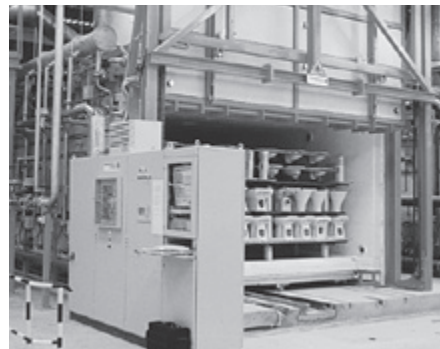


Application

Ignition transformers TZI and TGI are designed for high-voltage spark ignition of gas burners and gas-ignited or directly ignited oil burners. The ignition transformers can also be used on burners with single-electrode operation; the ignition current and ionisation current flow over a common electrode. Ignition transformer TZI fulfils the requirements for enclosure IP 20. It is suitable for installation in a control cabinet. Ignition transformer TGI in its die-cast aluminium housing meets the requirements for enclosure IP 65. It is suitable for on-site mounting near to the burner.



Bogie hearth forging furnace in the metallurgical industry

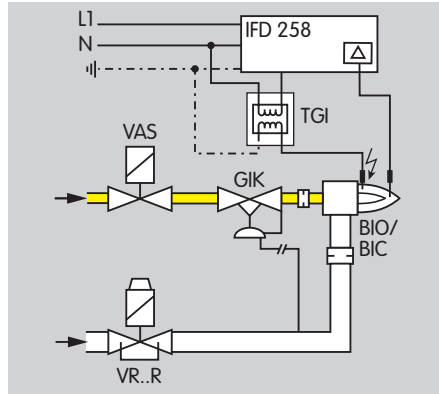


Intermittent shuttle kiln in the ceramics industry



Walking beam furnace with overhead firing

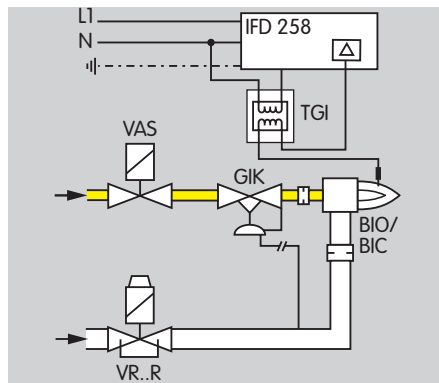
Examples of application



Double-electrode operation

Ignition using ignition electrode

Ignition transformer TGI is supplied with voltage via the automatic burner control unit IFD 258. The ignition transformer generates a high voltage. This high voltage creates ignition sparks between the ignition electrode and burner ground. After the burner start, a current flows via the ionisation electrode for flame control.



Single-electrode operation

Ignition using an ignition and ionisation electrode

After burner start, a flame control current flows via the same electrode that is also used for ignition.

Selection

Selection table

	R	W
TZI 5-15/20	●	●
TZI 5-15/100	●	●
TZI 7-25/20	●	●
TZI 7,5-12/100	●	●
TZI 7,5-20/33	●	●
TGI 5-15/100	●	●
TGI 7-25/20	●	●
TGI 7,5-12/100	●	●
TGI 7,5-20/33	●	●

Order example

TZI 5-15/20W

● = standard, ○ = available

Type code

Code	Description
TZI	Ignition transformer
TGI	Ignition transformer, enclosed
5	High voltage: 5 kV
7	7 kV
7,5	7.5 kV
-12	Output current: 12 mA at 50 Hz (9 mA at 60 Hz)
-15	15 mA at 50 Hz (11 mA at 60 Hz)
-20	20 mA at 50 Hz (15 mA at 60 Hz)
-25	25 mA at 50 Hz (18 mA at 60 Hz)
/20	Duty cycle: 20%
/33	33%
/100	100%
R	Mains voltage: 115 V
W	230 V

Technical data

Type	Input			Output			Duty cycle**	Enclosure	Weight kg
	V AC	Hz*	A*	V	mA*				
TZI 5-15/20W	230	50 (60)	0.5 (0.35)	5000	15 (11)		20	IP 20	0.9
TZI 5-15/100W	230	50 (60)	0.45 (0.35)	5000	15 (11)		100	IP 20	1.5
TZI 7-25/20W	230	50 (60)	1.1 (0.8)	7000	25 (18)		20	IP 20	1.5
TZI 7,5-12/100W	230	50 (60)	0.6 (0.45)	7500	12 (9)		100	IP 20	2
TZI 7,5-20/33W	230	50 (60)	0.9 (0.7)	7500	20 (15)		33	IP 20	2
TZI 5-15/20R	115	50 (60)	1 (0.7)	5000	15 (11)		20	IP 20	0.9
TZI 5-15/100R	115	50 (60)	0.9 (0.7)	5000	15 (11)		100	IP 20	1.5
TZI 7-25/20R	115	50 (60)	2.2 (1.6)	7000	25 (18)		20	IP 20	1.5
TZI 7,5-12/100R	115	50 (60)	1.2 (0.9)	7500	12 (9)		100	IP 20	2
TZI 7,5-20/33R	115	50 (60)	1.8 (1.35)	7500	20 (15)		33	IP 20	2
TGI 5-15/100W	230	50 (60)	0.45 (0.35)	5000	15 (11)		100	IP 65	3
TGI 7-25/20W	230	50 (60)	1.1 (0.8)	7000	25 (18)		20	IP 65	3
TGI 7,5-12/100W	230	50 (60)	0.6 (0.45)	7500	12 (9)		100	IP 65	3.5
TGI 7,5-20/33W	230	50 (60)	0.9 (0.7)	7500	20 (15)		33	IP 65	3.5
TGI 5-15/100R	115	50 (60)	0.9 (0.7)	5000	15 (11)		100	IP 65	3
TGI 7-25/20R	115	50 (60)	2.2 (1.6)	7000	25 (18)		20	IP 65	3
TGI 7,5-12/100R	115	50 (60)	1.2 (0.9)	7500	12 (9)		100	IP 65	3.5
TGI 7,5-20/33R	115	50 (60)	1.8 (1.35)	7500	20 (15)		33	IP 65	3.5

* Values in brackets apply to 60 Hz.

** For temperatures between -20 and +35°C.

Ambient temperature: -20 to +60°C.

Certification

Ignition transformers TZI and TGI are built for applications pursuant to the Machinery Directive 2006/42/EC.

TZI 7,5-20/33R

Complies with Canadian Standards Association CSA C22.2 No. 13-1962.



TZI 7,5-20/33R, TGI 7,5-20/33W

Complies with UL-506.



Detailed information on this product

www.docuthek.com → Elster Kromschroeder
Search term: TZI, TGI
Kind of document: Technical information

Contact

www.kromschroeder.com → Sales

Elster GmbH
Postfach 2809 · 49018 Osnabrück
Strohweg 1 · 49504 Lotte (Büren)
Germany

T +49 541 1214-0
F +49 541 1214-370
info@kromschroeder.com
www.kromschroeder.com
www.elster.com

Kromschroeder, a product
brand of the Elster Group



We reserve the right to make technical modifications
in the interests of progress.

Copyright © 2007 Elster Group
All rights reserved.