

# Gas filter GFK

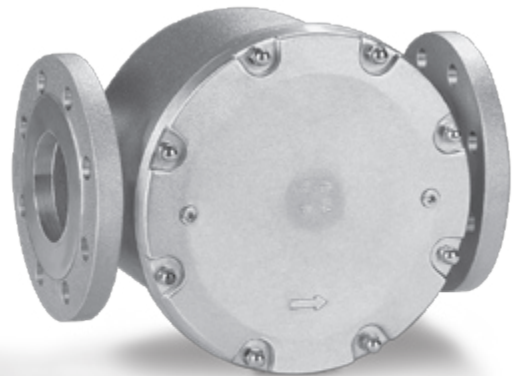
Product brochure · GB  
1.2.1.2 Edition 03.09



CE

**krom**  
**schroder**

- For the protection of downstream devices against blockage
- Very high throughput
- High purification efficiency
- Long life
- Easy-to-clean filter pad
- EC type-tested and certified





GFK..R

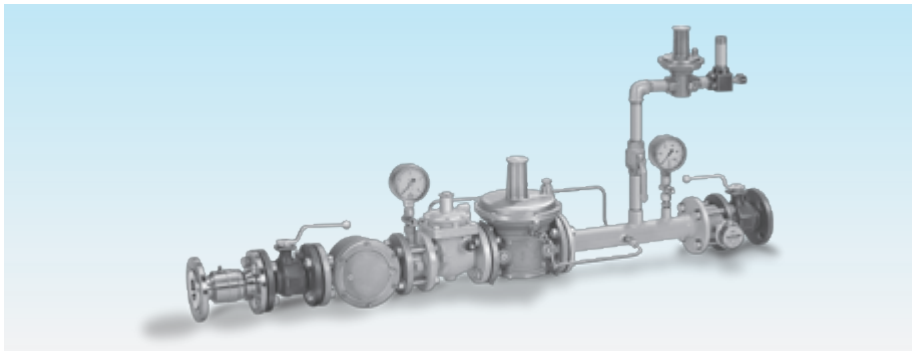


GFK..F

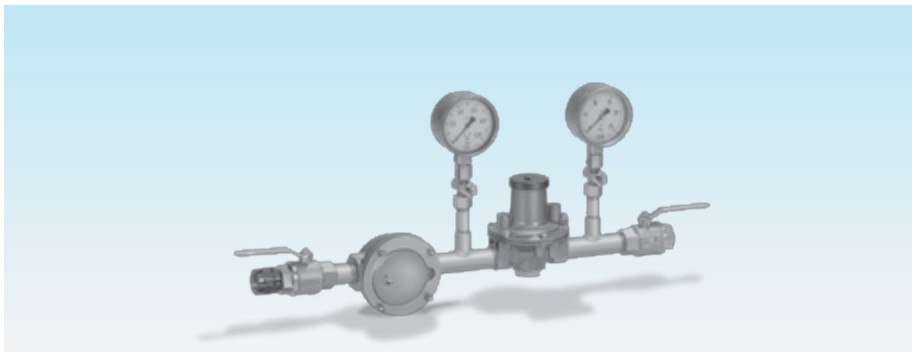
## Application

Suitable for filtration of the fuel gas and combustion air supply to all gas consuming appliances.

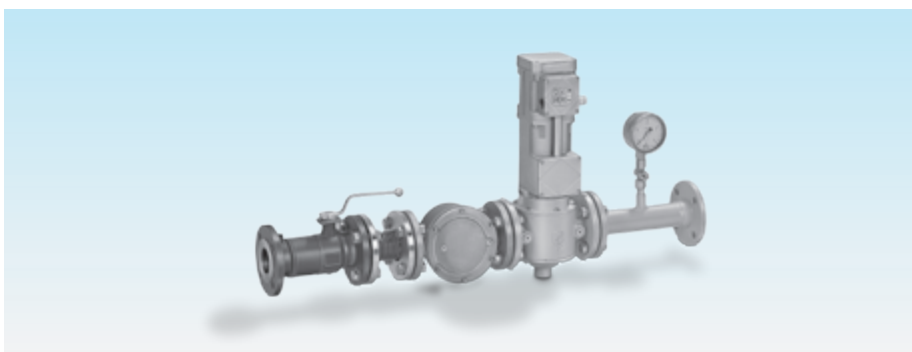
## Application examples



Gas pressure control system with GFK..F



Pressure control system with GFK..R



Main gas shut-off device with GFK..F

## Selection

### Standard-range

	10	40	60	-3	-6
GFK 15R	●	●			●
GFK 20R	●	●			●
GFK 25R	●	●			●
GFK 32R	●	●			●
GFK 40R	●	●			●
GFK 50R	●	●			●
GFK 65R	●	●			●
GFK 40F	●		●		●
GFK 50F	●		●		●
GFK 65F	●		●		●
GFK 80F	●		●		●
GFK 100F	●		●		●
GFK 125F	●			●	
GFK 150F	●			●	
GFK 200F	●			●	
GFK 250F	●			●	

### Order example

GFK 32R10-6

### T-Product range

	N	A	40	-3
GFK 15T	●		●	●
GFK 20T	●		●	●
GFK 25T	●		●	●
GFK 40T	●		●	●
GFK 50T	●	●	●	●
GFK 65T	●	●	●	●
GFK 80T		●	●	●
GFK 100T		●	●	●

### Order example

GFK 40TN40-3

### Type code

Code	Description
GFK	Gas filter
15, 20, 25, 32, 40, 50, 65, 80, 100, 125, 150, 200, 250	Nominal diameter
T	T-product
R	Rp internal thread
F	Flanged connection to ISO 7005
A	ANSI flange
N	NPT internal thread
	Max. inlet pressure $p_{e \max}$ .
10	1 bar
40	4 bar (58 psig)
60	6 bar
-3	Screw plug at the inlet and outlet
-6	Pressure test point at the inlet and outlet

## Technical data

Gas type:  
natural gas, town gas, LPG (gaseous), bio-  
logically produced methane and air.

Max. inlet pressure  $p_e$ :  
1 bar GFK 15 to 250,  
4 bar (60 psig) GFK 15 to 65,  
GFK 15T to 100T,  
6 bar GFK 40 to 100.

Ambient temperature:  
-15 to +80°C (5 to 176°F).

Continuous operation at high tempera-  
tures accelerates the ageing of elastomer  
materials.

### Version to DIN 3386

#### Housing

GFK 15 to 100 made from AlSi.

GFK 125 to 250 made from sheet steel.

GFK..R: Rp internal thread connection to  
ISO 7-1.

GFK..F: flanged connection to ISO 7005,  
PN 16.

GFK..N: NPT internal thread.

GFK..A: ANSI 150 flanged connection.

Filter pad: polypropylene fleece  
(standard 50 µm).

#### Pressure test points on the cover

GFK 15 to 100:

Inlet side: Rp 1/8 pressure test nipple,

Outlet side: Rp 1/8 pressure test nipple.

GFK 125 to 250:

Inlet side: Rp 1/8 plug,

Outlet side: Rp 1/8 plug.

GFK 15T to 100T:

Inlet side: Rp 1/8 plug,

Outlet side: Rp 1/8 plug.

## Certification

### EC type-tested and certified

pursuant to:

– Gas Appliances Directive (90/396/EEC)



## Maintenance cycles

We recommend that a function check is car-  
ried out every six months.

Depending on the operating conditions regu-  
lar cleaning may be required.

## Detailed information on this product

[www.docuthek.com](http://www.docuthek.com) → Direct access

Search term: GFK

Kind of document: Technical information

## Contact

[www.kromschroeder.com](http://www.kromschroeder.com) → Sales

Elster GmbH  
Postfach 2809 · 49018 Osnabrück  
Strothweg 1 · 49504 Lotte (Büren)  
Germany

T +49 541 1214-0  
F +49 541 1214-370  
info@kromschroeder.com  
www.kromschroeder.com  
www.elster.com

Kromschroder, a product  
brand of the Elster Group



We reserve the right to make technical modifications  
in the interests of progress.

Copyright © 2007 Elster Group  
All rights reserved.